



Northwest Forest Plan
Interagency Regional
Monitoring Program

Northwest Forest Plan – The First 20 Years [1994-2013] Socioeconomic Monitoring

Elisabeth Grinspoon, PhD
Delilah Jaworski, TEAMS



Monitoring question:

What is the status and trend of social and economic well-being in the NWFP area?



Monitoring approach:



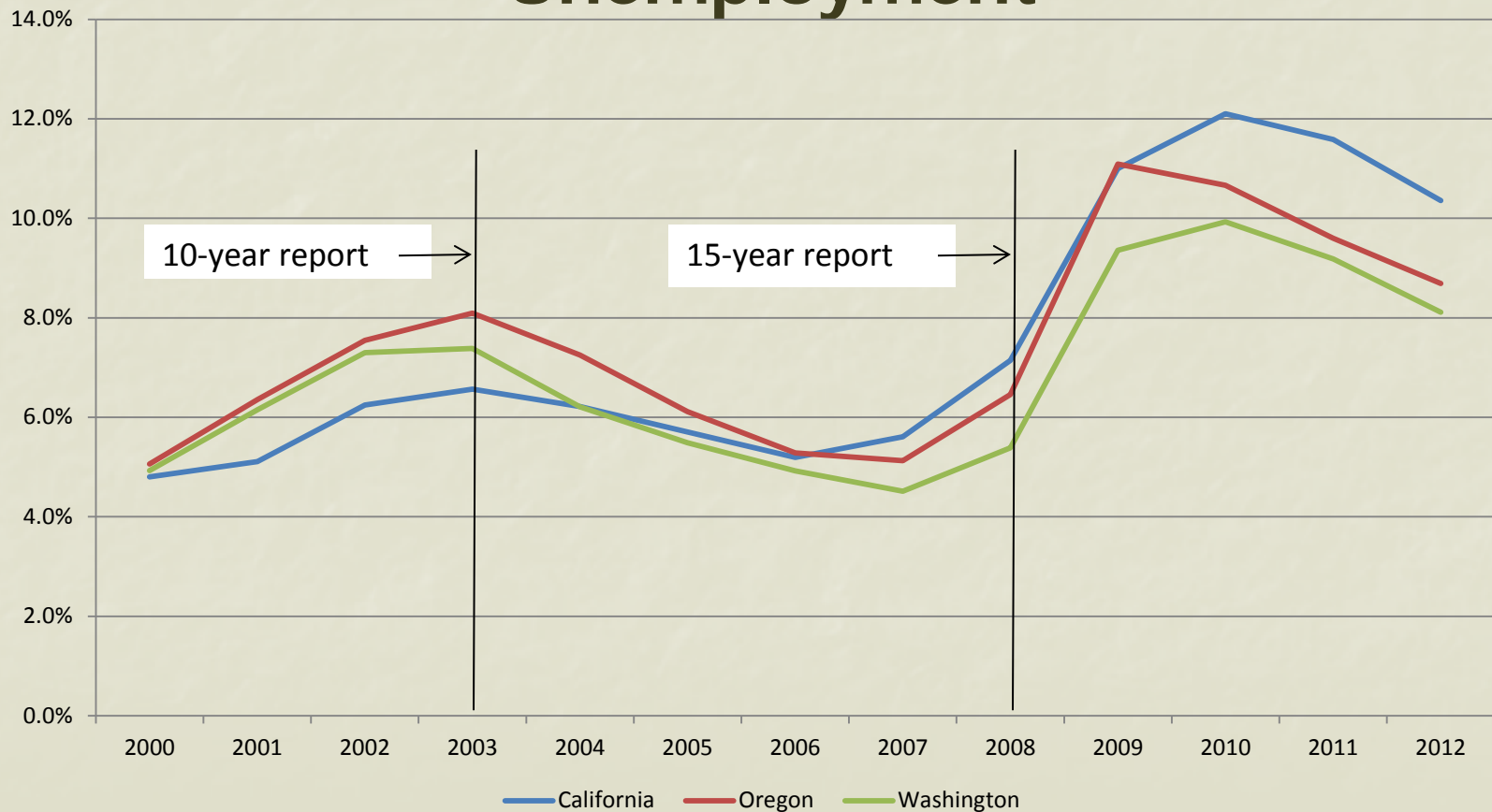
Use existing social, economic, and federal agency data to assess the status and trends in social and economic conditions.

Key findings

- Federal timber harvest declined between 2005-2009, but has increased since 2009
- Employment associated with Forest Service and BLM programs contributes to socioeconomic well-being in the NWFP area.
- Recreation visitor spending is the largest single source of economic activity associated with NFS and BLM management in the NWFP area.
- Population has increased in the NWFP area since 2000, most of the growth is in metropolitan counties

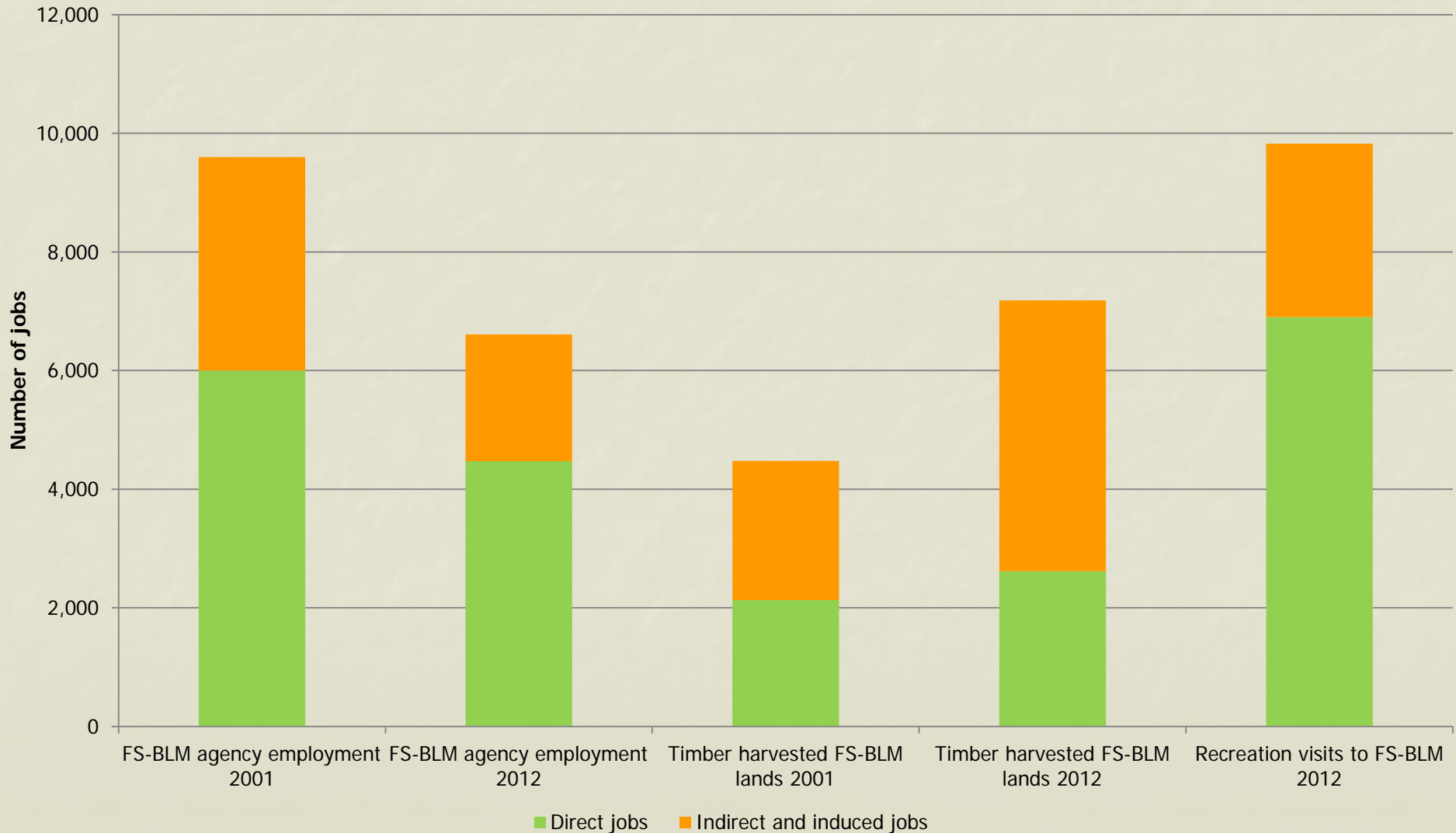
NWFP area in a global environment

Unemployment



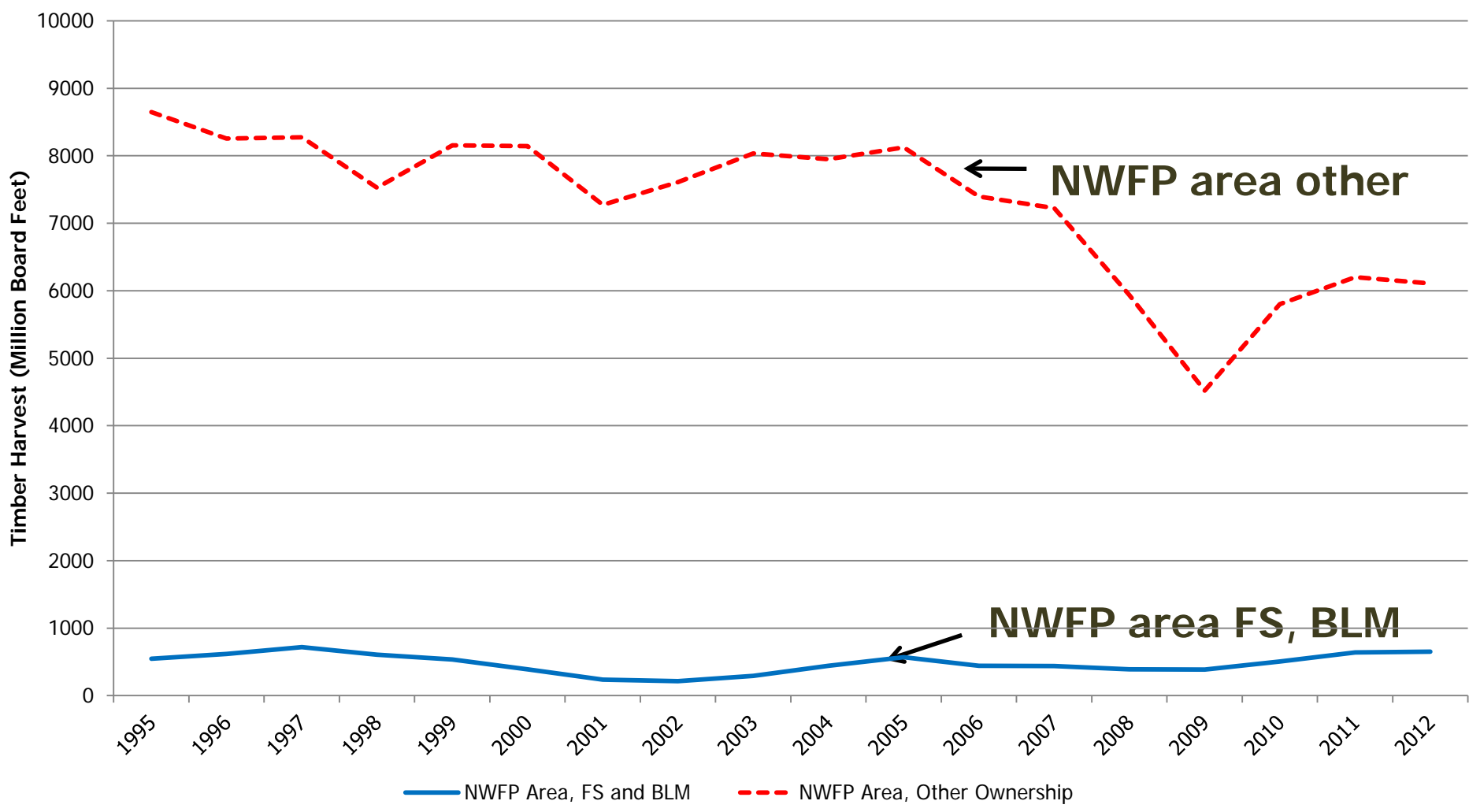
Key Results

FS and BLM Job Contribution, 2001 and 2012



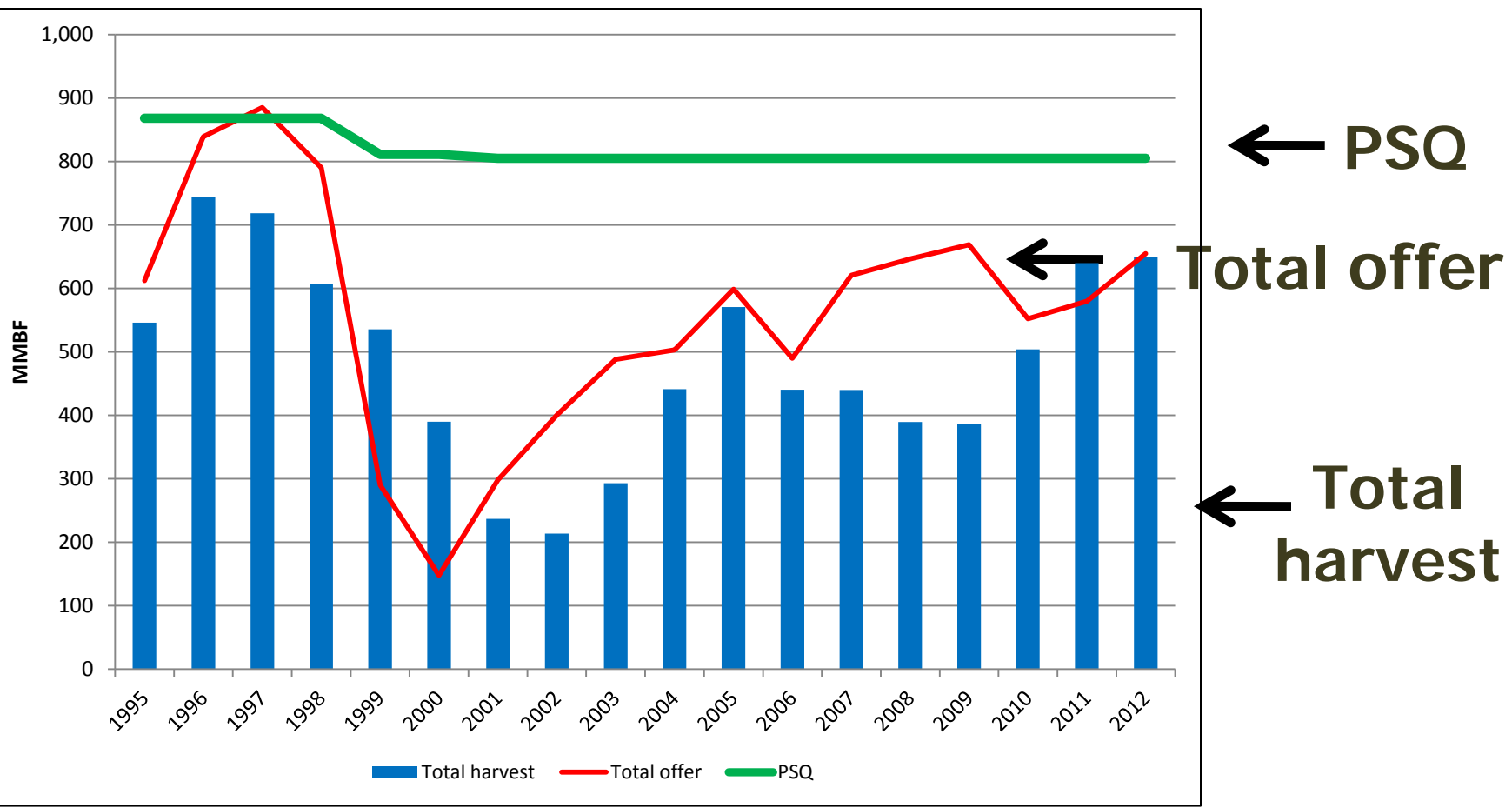
Key Results

Timber Harvest between 1996 and 2012



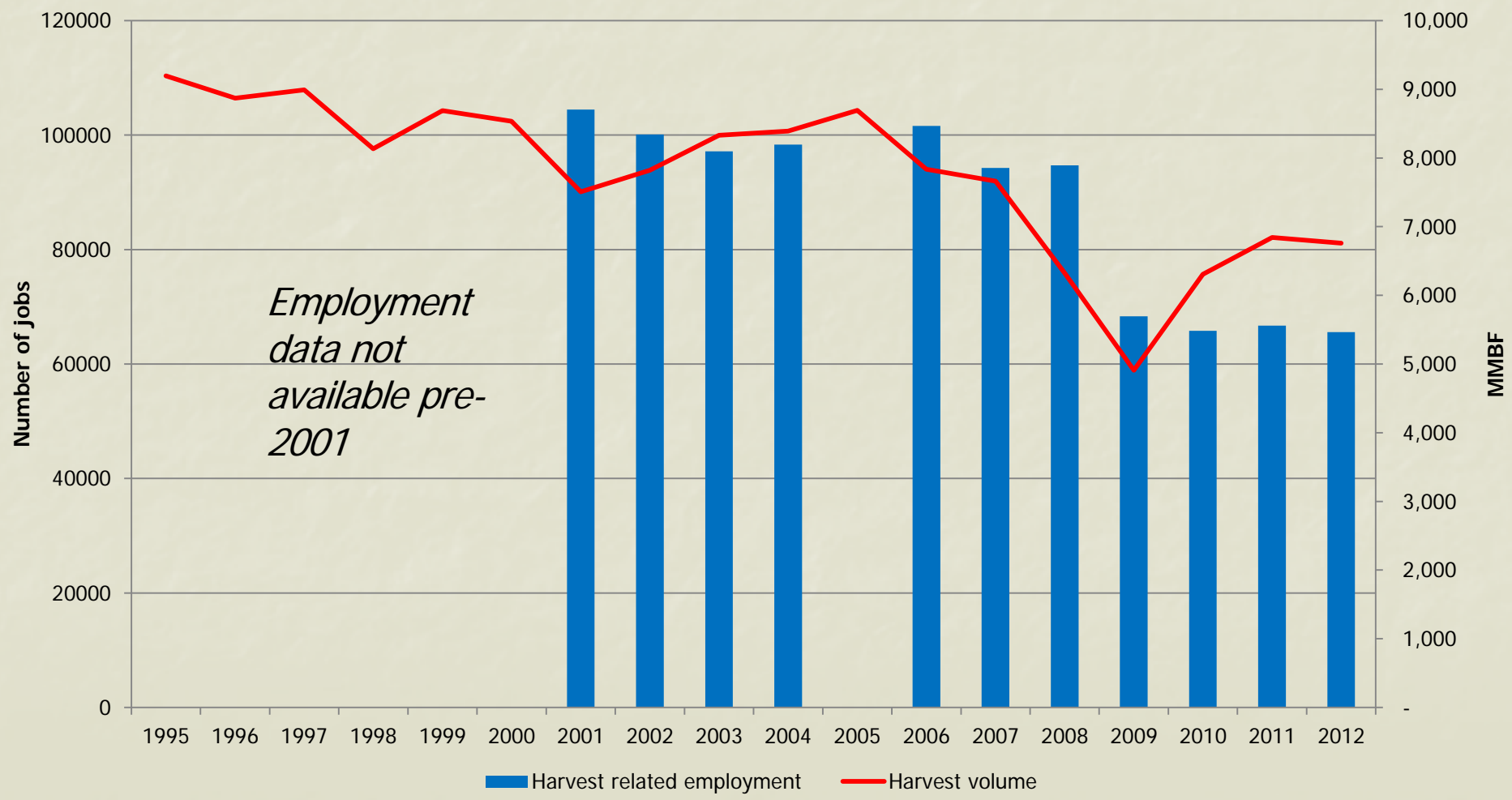
Key Results

Timber Offered for Sale and Harvested On Federal Lands



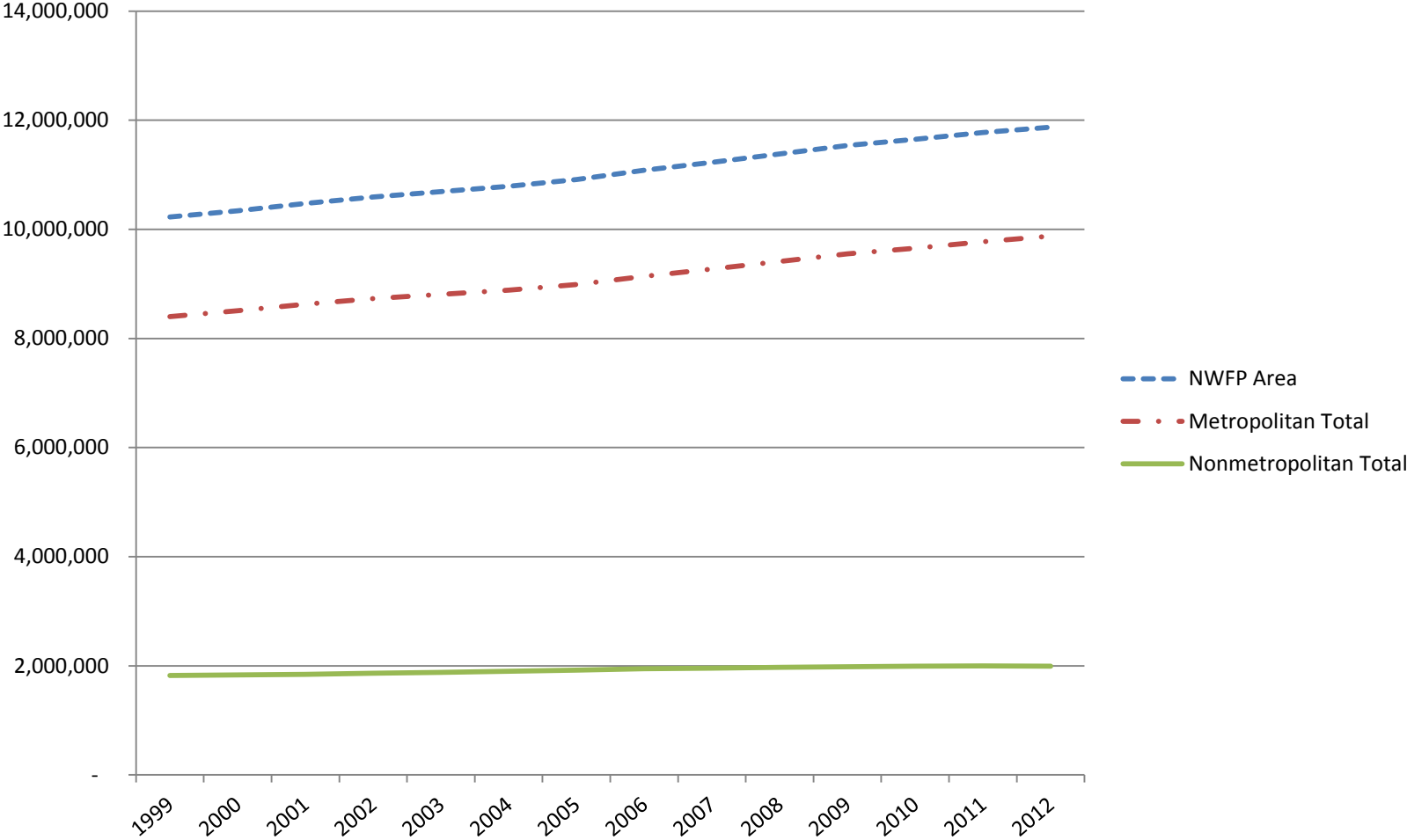
Key Results

NWFP Area Logging and Primary Wood Processing Employment and Timber Harvest



Key Results

Population



Summary

- **Total employment in forest products industries, including logging, primary and secondary wood manufacturing has been variable and has declined overall by forty percent since 2001. However, employment in forest products industries related to Forest Service and BLM harvests increased between 2001 and 2012.**
- **Volume offered from NFS and BLM lands has fluctuated, but has been on a general upward trend since 2000**
- **In the past decade, the population of nonmetropolitan counties has increased more slowly than metropolitan counties**
- **In periods of economic hardship, such as the one that began in 2008, federal lands and federal agencies played especially important roles in contributing to socioeconomic well-being in rural America.**

Q & A

Sharing Socioeconomic Monitoring Data

